

216.681

170.507

79.932  
78.435  
77.478  
77.161  
76.843  
66.378  
60.458  
52.033  
49.324  
49.252  
46.224  
45.861  
38.735  
38.385  
37.765  
34.630  
34.428  
31.474  
28.242  
27.641  
26.936  
24.342  
20.608  
18.925  
18.796  
15.535  
13.450  
0.141



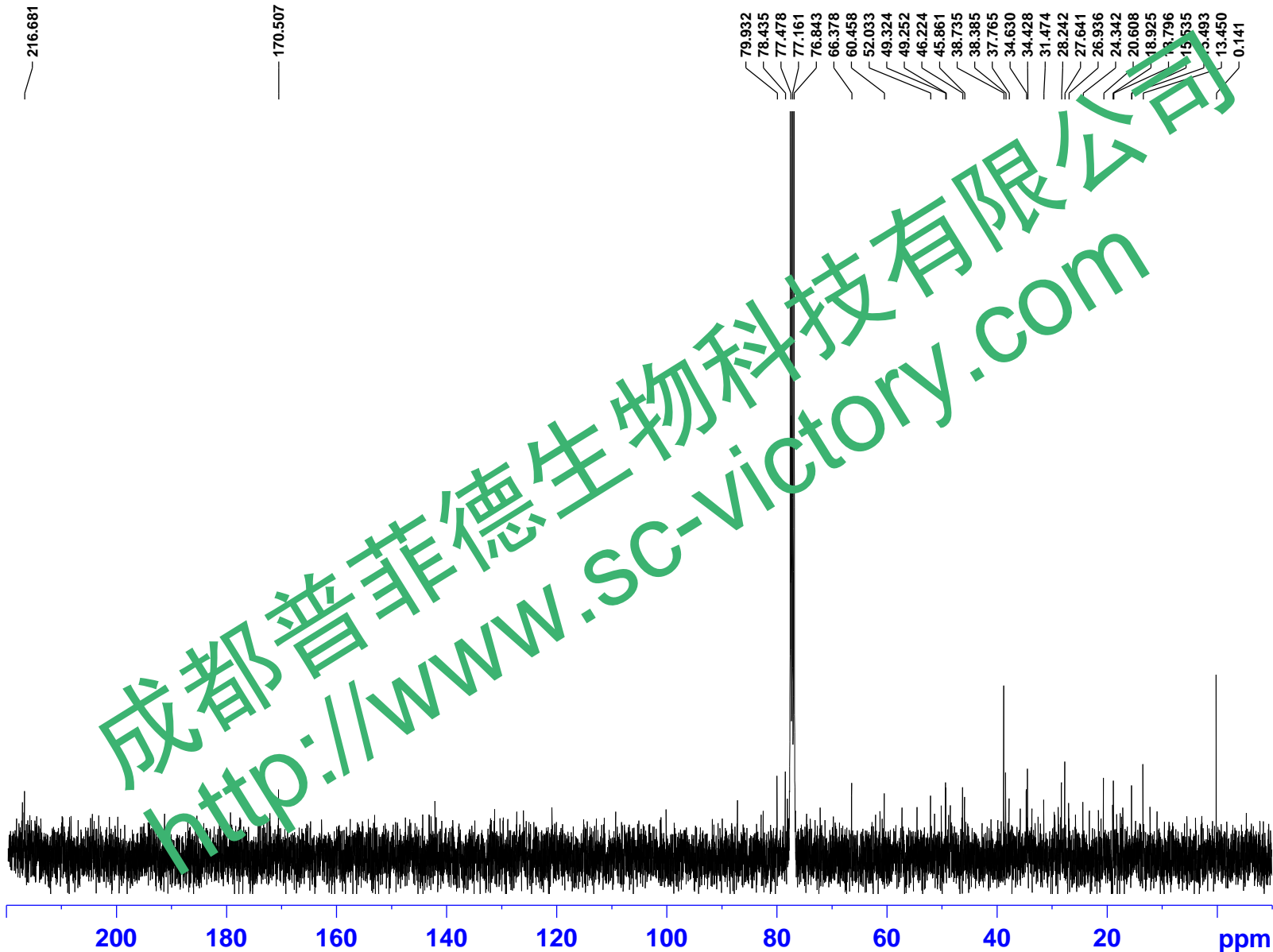
Current Data Parameters  
NAME GG  
EXPNO 2  
PROCNO 1

F2 - Acquisition Parameters  
Date\_ 20140504  
Time 20.41  
INSTRUM spect  
PROBHD 5 mm PABBO BB-  
PULPROG zgpg30  
TD 65536  
SOLVENT CDCl3  
NS 2500  
DS 4  
SWH 24038.461 Hz  
FIDRES 0.366798 Hz  
AQ 1.3631988 sec  
RG 194.85  
DW 20.800 usec  
DE 6.50 usec  
TE 300.5 K  
D1 2.00000000 sec  
D11 0.03000000 sec  
TD0 1

==== CHANNEL f1 =====  
NUC1 13C  
P1 9.24 usec  
PLW1 95.00000000 W  
SFO1 100.6228293 MHz

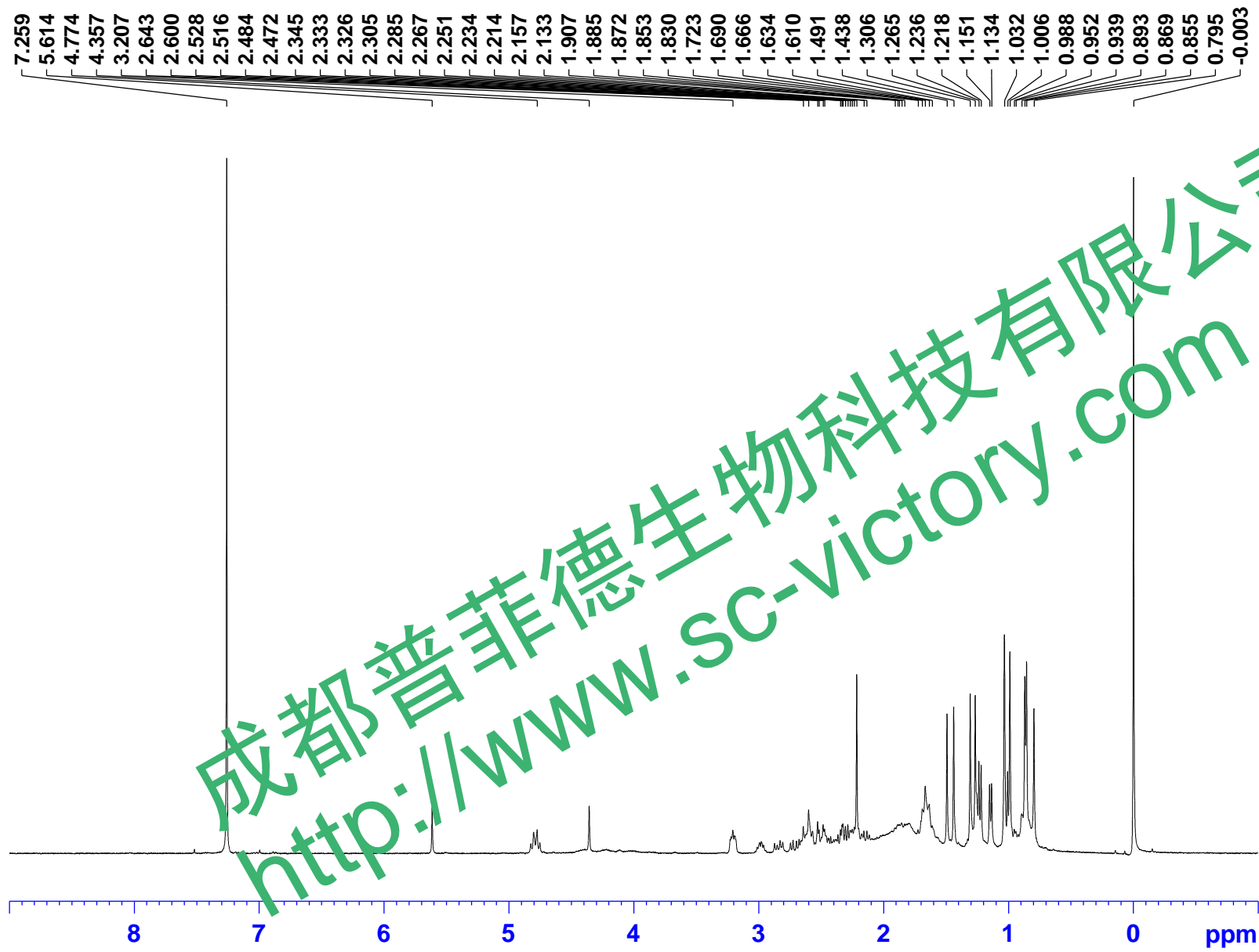
==== CHANNEL f2 =====  
CPDPRG2 waltz16  
NUC2 1H  
PCPD2 80.00 usec  
PLW2 19.00000000 W  
PLW12 0.25292000 W  
PLW13 0.16187000 W  
SFO2 400.1316005 MHz

F2 - Processing parameters  
SI 32768  
SF 100.6127533 MHz  
WDW EM  
SSB 0  
LB 1.00 Hz  
GB 0  
PC 1.00



200 180 160 140 120 100 80 60 40 20 ppm

成都普菲德生物科技有限公司  
http://www.sc-victory.com



Current Data Parameters  
NAME GG  
F1P10 1  
PROC10 1

F2 - Acquisition Parameters  
Date\_ 20140504  
Time 18.17  
INSTRUM spect  
PROBHD 5 mm PABBO BB-  
PULPROG zg30  
TD 65536  
SOLVENT CDCl3  
NS 16  
DS 2  
SWH 8223.685 Hz  
FIDRES 0.125483 Hz  
AQ 3.9846387 sec  
RG 124.98  
DW 60.800 usec  
DE 6.50 usec  
TE 299.6 K  
D1 1.0000000 sec  
TD0 1

==== CHANNEL f1 =====  
NUC1 1H  
P1 9.23 usec  
PLW1 20.0000000 W  
SFO1 400.1324710 MHz

F2 - Processing parameters  
SI 65536  
SF 400.1300101 MHz  
WDW EM  
SSB 0  
LB 0.30 Hz  
GB 0  
PC 1.00

成都普菲德生物科技有限公司  
<http://www.sc-victory.com>

0.89  
2.04  
1.13  
2.00  
1.17  
1.29  
1.34  
4.94  
10.29  
9.17  
12.12  
7.69  
9.08  
5.39  
3.91  
15.17  
12.56  
4.89