

Display Report

Analysis Info

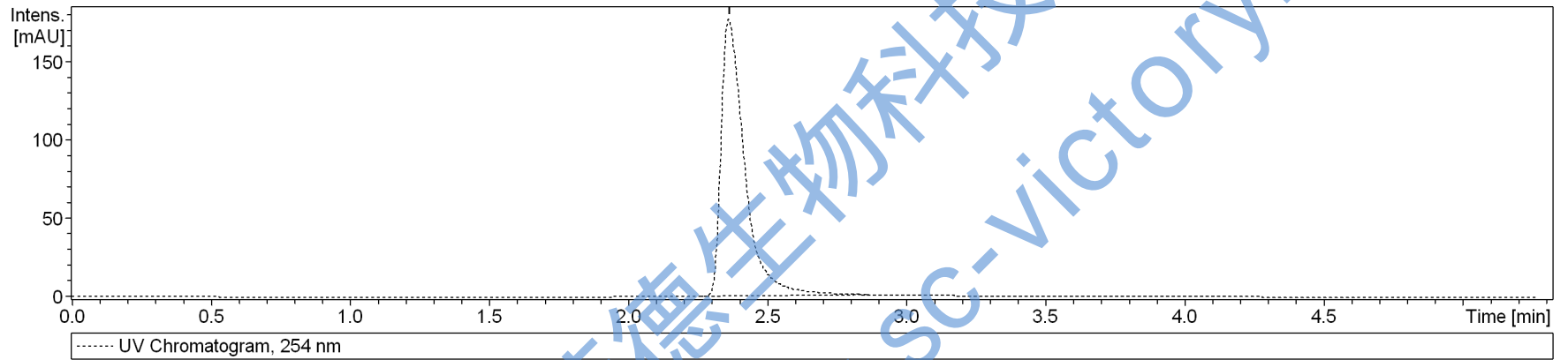
Analysis Name D:\Data\test\0203\muxicaogan_3_01_702.d
Method 702.m
Sample Name muxicaogan
Comment

Acquisition Date 2/3/2015 10:08:51 AM

Operator bruker
Instrument amaZon SL

Acquisition Parameter

Ion Source Type	ESI	Ion Polarity	Positive	Alternating Ion Polarity	on
Mass Range Mode	UltraScan	Scan Begin	70 m/z	Scan End	1200 m/z
Capillary Exit	140.0 V	n/a	n/a	Trap Drive	50.6
Accumulation Time	1942 μ s	Averages	5 Spectra	Auto MS/MS	off



#	RT [min]	Area	Area Frac. %
1	2.4	1049.7	100.0

Display Report

Analysis Info

Analysis Name D:\Data\test\0203\muxicaogan_3_01_702.d
Method 702.m
Sample Name muxicaogan
Comment

Acquisition Date 2/3/2015 10:08:51 AM

Operator bruker
Instrument amaZon SL

Acquisition Parameter

Ion Source Type	ESI	Ion Polarity	Positive	Alternating Ion Polarity	on
Mass Range Mode	UltraScan	Scan Begin	70 m/z	Scan End	1200 m/z
Capillary Exit	140.0 V	n/a	n/a	Trap Drive	50.6
Accumulation Time	1942 μ s	Averages	5 Spectra	Auto MS/MS	off

