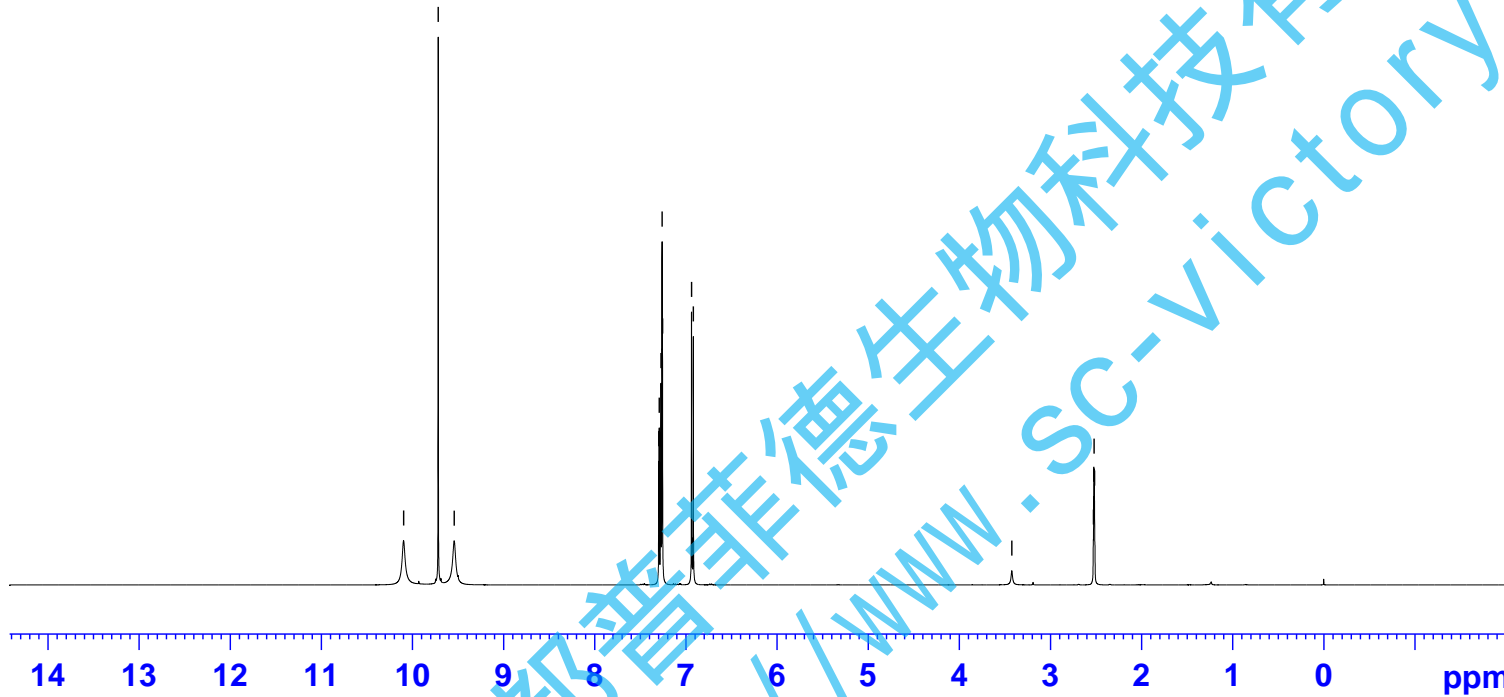


GLP70



10.096  
9.716  
9.540  
7.296  
7.291  
7.276  
7.271  
7.260  
7.255  
6.937  
6.927  
6.917  
3.422  
2.528  
2.523  
2.519  
2.515



Current Data Parameters  
NAME GLP70  
EXPNO 10  
PROCNO 1

F2 - Acquisition Parameters

INSTRUM spect  
PROBHD Z116098\_0564 (  
PULPROG zg30  
TD 65536  
SOLVENT DMSO  
NS 16  
DS 2  
SWH 8012.820 Hz  
FIDRES 0.244532 Hz  
AQ 4.0894465 sec  
RG 62.81  
DW 62.400 usec  
DE 6.50 usec  
TE 300.0 K  
D1 1.00000000 sec  
TD0 1  
SFO1 400.1324708 MHz  
NUC1 1H  
P1 10.35 usec  
PLW1 14.56099987 W

F2 - Processing parameters  
SI 65536  
SF 400.129949 MHz  
WDW EM  
SSB 0  
LB 0.30 Hz  
GB 0  
PC 1.00

0.946  
1.053  
0.954  
1.989  
1.000

成都普菲德生物科技有限公司  
http://www.sc-victory.com

GLP70

— 191.52

— 152.59  
— 146.35

— 129.34  
— 124.95  
— 116.00  
— 114.85

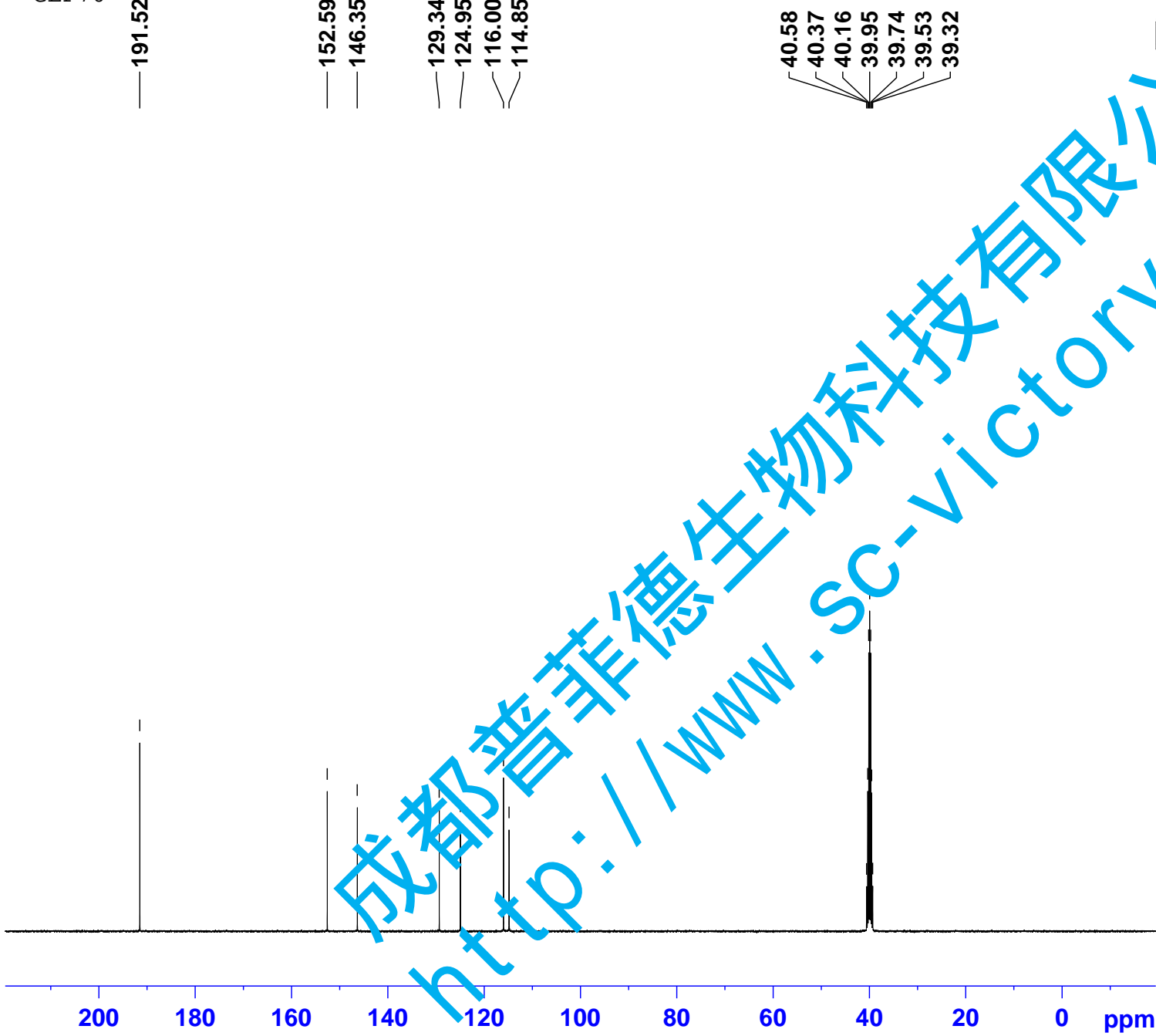
40.58  
40.37  
40.16  
39.95  
39.74  
39.53  
39.32



Current Data Parameters  
 NAME GLP70  
 EXPR 11  
 PROCNO 1  
 F2 - A i i i n P r m r

INSTRUM spect  
 PROBHD z116098\_0564 (  
 PULPROG zgpg30  
 TD 65536  
 SOLVENT DMSO  
 NS 600  
 DS 4  
 SWH 24038.461 Hz  
 FIDRES 0.733596 Hz  
 AQ 1.3631488 sec  
 RG 198.68  
 DW 20.800 usec  
 DE 6.50 usec  
 TE 300.0 K  
 D1 2.00000000 sec  
 D11 0.03000000 sec  
 TD0 1  
 SFO1 100.6228298 MHz  
 NUC1 13C  
 P1 10.53 usec  
 PLW1 69.16899872 W  
 SFO2 400.1316005 MHz  
 NUC2 1H  
 CPDPRG[2] waltz16  
 PCPD2 90.00 usec  
 PLW2 14.56099987 W  
 PLW12 0.19257000 W  
 PLW13 0.09686100 W

F2 - Processing parameters  
 SI 32768  
 SF 100.6127685 MHz  
 WDW EM  
 SSB 0  
 LB 1.00 Hz  
 GB 0  
 PC 1.40



成都普菲德生物科技有限公司  
<http://www.sc-victory.com>