

10.650
 7.860
 7.820
 7.731
 7.725
 7.711
 7.707
 7.688
 7.648
 7.486
 7.476
 7.472
 7.463
 7.456
 7.449
 7.446
 7.438
 6.044
 6.038
 5.957
 5.952
 3.892

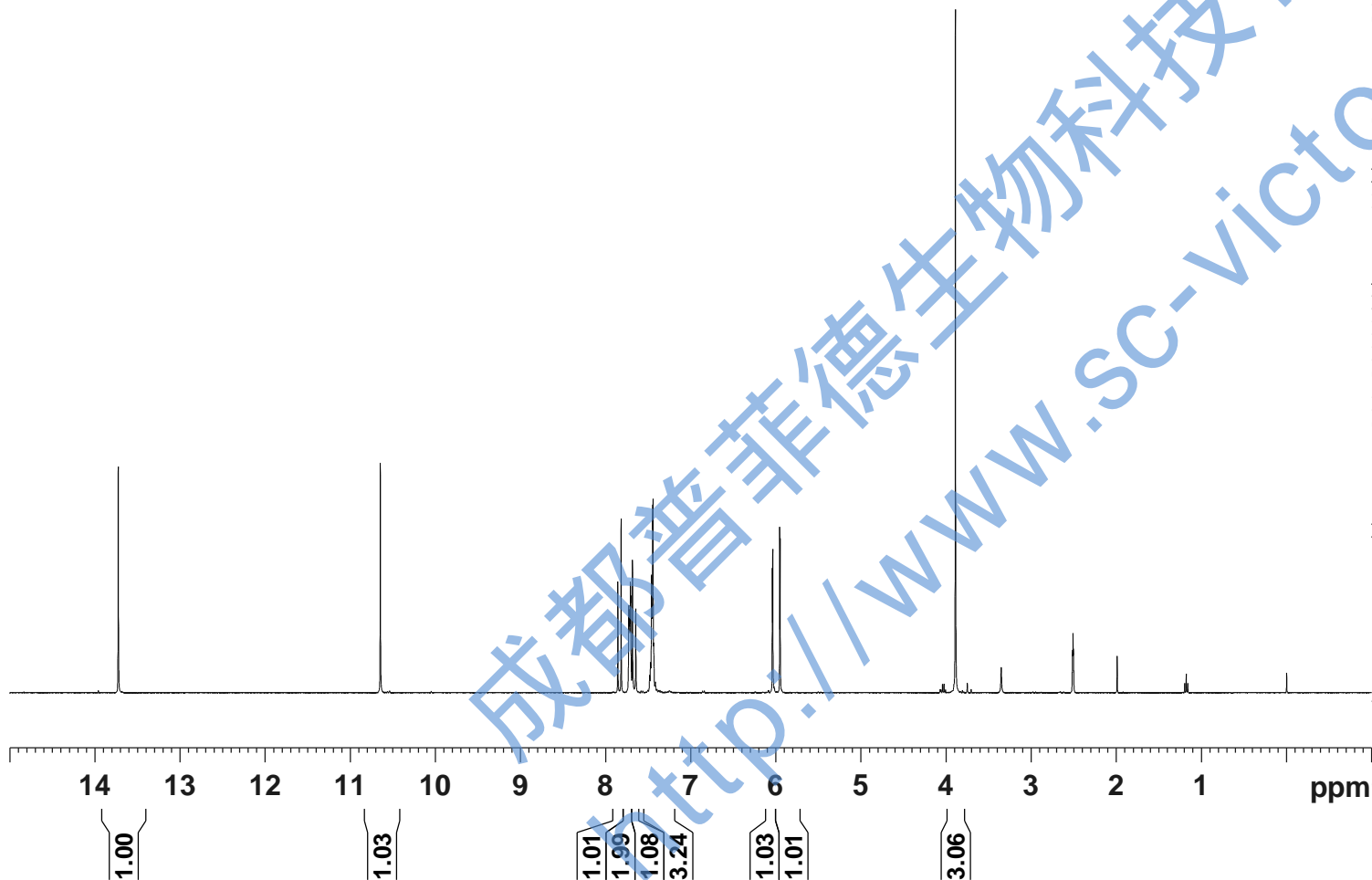


Current Data Parameters
 NAME XiaoDouKouMing-1H NMR DMSO
 EXPNO 1
 PROCNO 1

F2 - Acquisition Parameters
 Date_ 20180308
 Time 15.12
 INSTRUM spect
 PROBHD 5 mm PABBO BB/
 PULPROG zg30
 TD 65536
 SOLVENT DMSO
 NS 2
 DS 2
 SWH 8012.820 Hz
 FIDRES 0.122266 Hz
 AQ 4.0894465 sec
 RG 92
 DW 62.400 usec
 DE 6.50 usec
 TE 301.1 K
 D1 1.00000000 sec
 TD0 1

===== CHANNEL f1 =====
 SF01 400.1324710 MHz
 NUC1 1H
 P1 14.79 usec
 PLW1 11.50800037 W

F2 - Processing parameters
 SI 65536
 SF 400.1299991 MHz
 WDW EM
 SSB 0
 LB 0.30 Hz
 GB 0
 PC 1.00
 SR -0.91 Hz



— 191.72

— 166.26
— 165.02
— 162.67

— 141.70
— 134.90
— 130.23
— 128.98
— 128.31
— 127.49

— 105.11

— 95.82
— 91.67

— 55.98



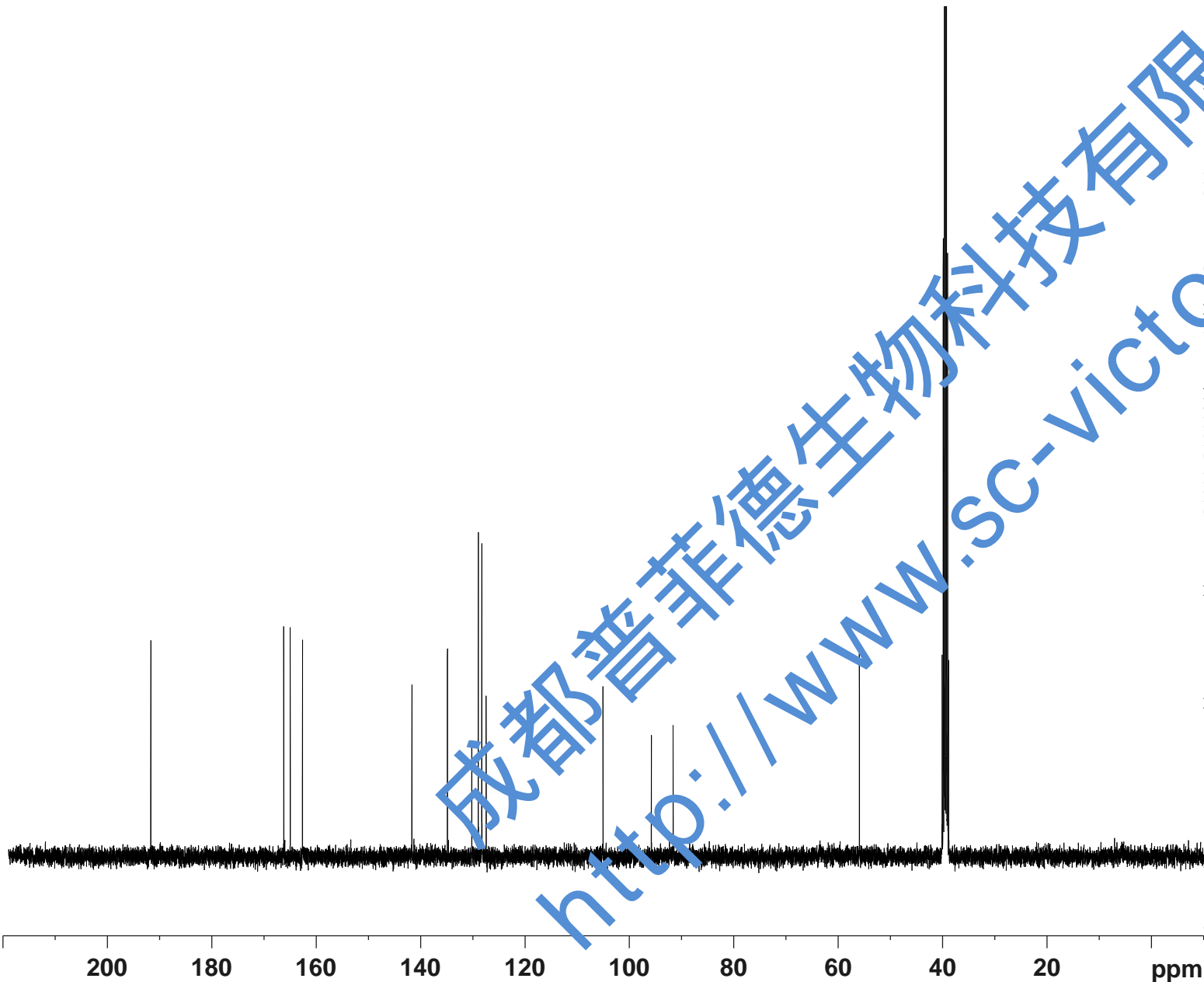
Current Data Parameters
NAME XiaoDouKouling-13C NMR DMSO
F1PNO 2
PROCNO 1

F2 - Acquisition Parameters
Date_ 20180308
Time 15.21
INSTRUM spect
PROBHD 5 mm PABBO BB/
PULPROG zgig30
TD 65536
SOLVENT DMSO
NS 132
DS 4
SWH 24038.461 Hz
FIDRES 0.366798 Hz
AQ 1.3631488 sec
RG 202.5
DW 20.800 usec
DE 6.50 usec
TE 301.1 K
D1 2.00000000 sec
D11 0.03000000 sec
TD0 1

==== CHANNEL f1 =====
SFO1 100.6228298 MHz
NUC1 13C
P1 10.13 usec
PLW1 51.00000000 W

==== CHANNEL f2 =====
SFO2 400.1316005 MHz
NUC2 1H
CPDPRG[2] waltz16
PCPD2 90.00 usec
PLW2 11.50800037 W
PLW12 0.31077999 W

F2 - Processing parameters
SI 262144
SF 100.6128220 MHz
WDW EM
SSB 0
LB 1.00 Hz
GB 0
PC 1.40
SR 52.97 Hz



成都普菲德生物科技有限公司
http://www.sc-victory.com