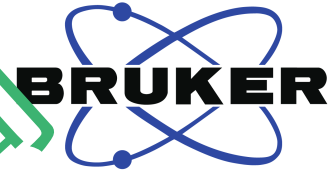


— 205.14

174.43  
 172.25  
 171.87  
 171.34  
 167.67  
 142.12  
 140.18  
 135.00  
 134.57  
 133.06  
 132.48  
 131.40  
 131.19  
 129.71  
 129.69  
 128.89  
 128.36

85.89  
 82.33  
 79.06  
 77.52  
 76.84  
 76.30  
 74.83  
 72.37  
 59.30  
 57.19  
 47.92  
 44.64  
 37.54  
 36.67  
 26.96  
 23.18  
 22.38  
 20.79  
 14.72  
 13.99  
 12.59  
 10.45



Current Data Parameters  
 NAME SanJianShanNingJian-13C NMR CD3OD  
 EXPNO 1  
 PROCNO 1

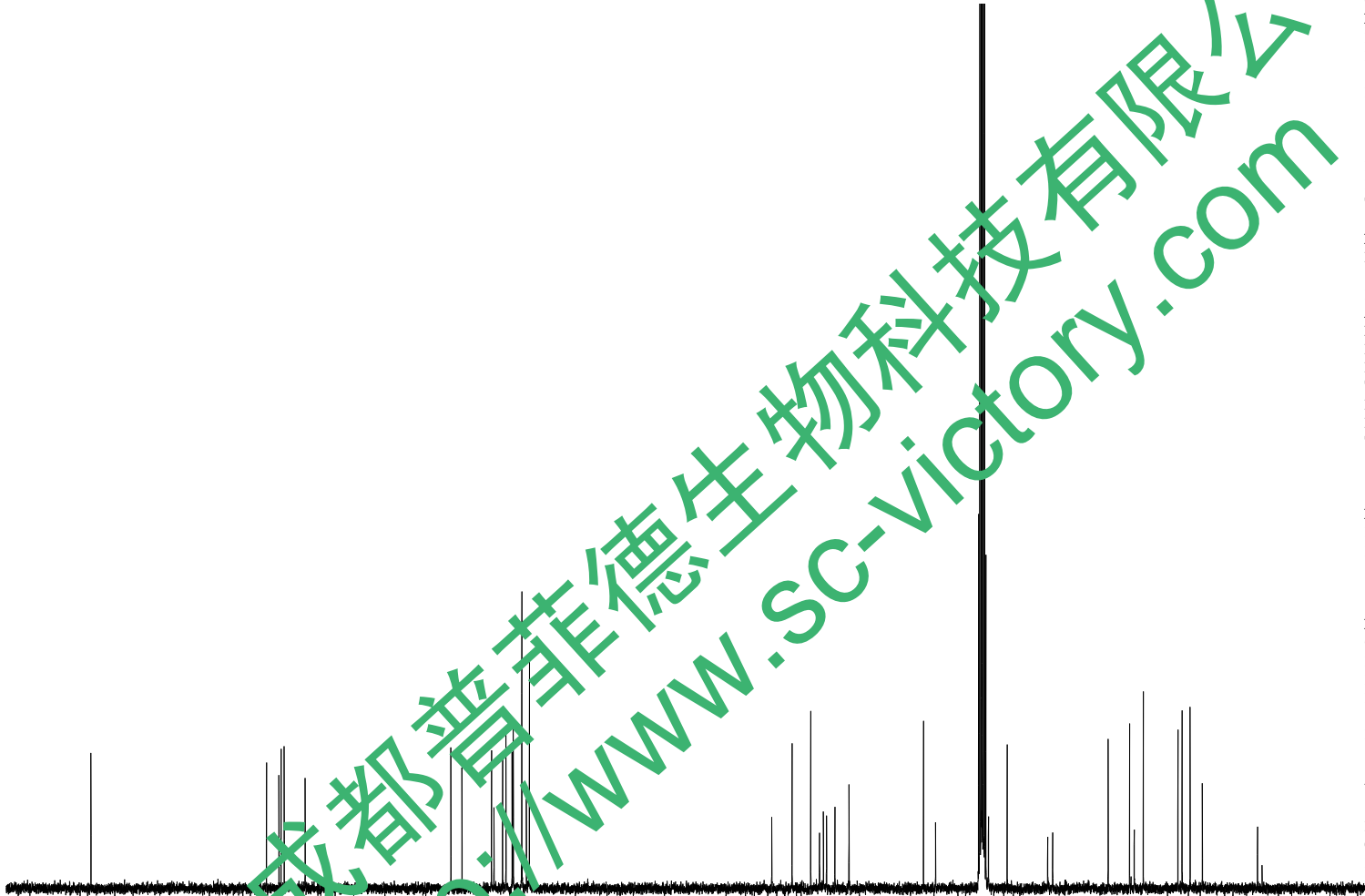
F2 - Acquisition Parameters

INSTRUM spect  
 PROBHD 5 mm PABBO BB/  
 PULPROG zgig30  
 TD 65536  
 SOLVENT MeOD  
 NS 2410  
 DS 4  
 SWH 26041.666 Hz  
 FIDRES 0.397364 Hz  
 AQ 1.2582912 sec  
 RG 202.5  
 DW 19.200 usec  
 DE 6.50 usec  
 TE 301.2 K  
 D1 2.00000000 sec  
 D11 0.03000000 sec  
 TDO 1

==== CHANNEL f1 =====  
 SF01 100.6228298 MHz  
 NUC1 13C  
 P1 10.13 usec  
 PLW1 51.00000000 W

==== CHANNEL f2 =====  
 SF02 400.1316005 MHz  
 NUC2 1H  
 CPDPRG[2] waltz16  
 PCPD2 90.00 usec  
 PLW2 11.50800037 W  
 PLW12 0.31077999 W

F2 - Processing parameters  
 SI 32768  
 SF 100.6126275 MHz  
 WDW EM  
 SSB 0  
 LB 1.00 Hz  
 GB 0  
 PC 1.40  
 SR -141.48 Hz



200 180 160 140 120 100 80 60 40 20 0 ppm

成都普菲德生物科技有限公司  
<http://www.SC-victory.com>